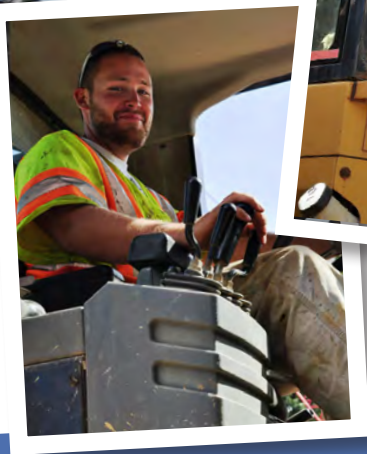
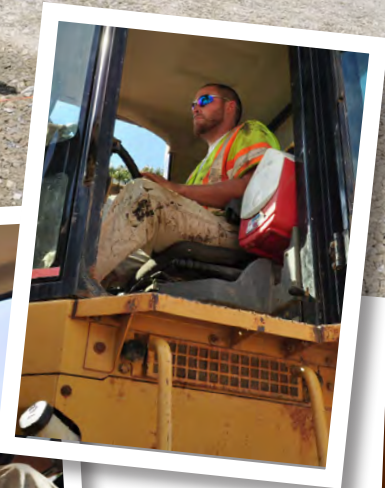


SPOTLIGHT ON

HIGHWAY AND IRONWORKER APPRENTICE PROGRAMS



HIGHWAY APPRENTICE PROGRAM

The State Approved Highway Apprentice Program was launched in 2010. The program is typically a four-year program. Highway apprentices follow the same curriculum as carpentry apprentices during their first two years. Highway apprentices are attached to the Highway Division and work with mentors in the field during their four years. During the third and fourth years the training is more specific to Highway/Heavy Highway work. Apprentices receive training in construction practices relative to the asphalt and concrete work required for Heavy Highway construction, as well as training in grading and plans. Highway apprentices work in the field with mentors from March to November and then in classroom in January to early March due to the impact of weather and environment on Highway projects. Currently apprentices are working on projects located in Pennsylvania.

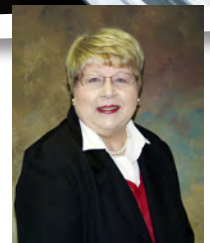
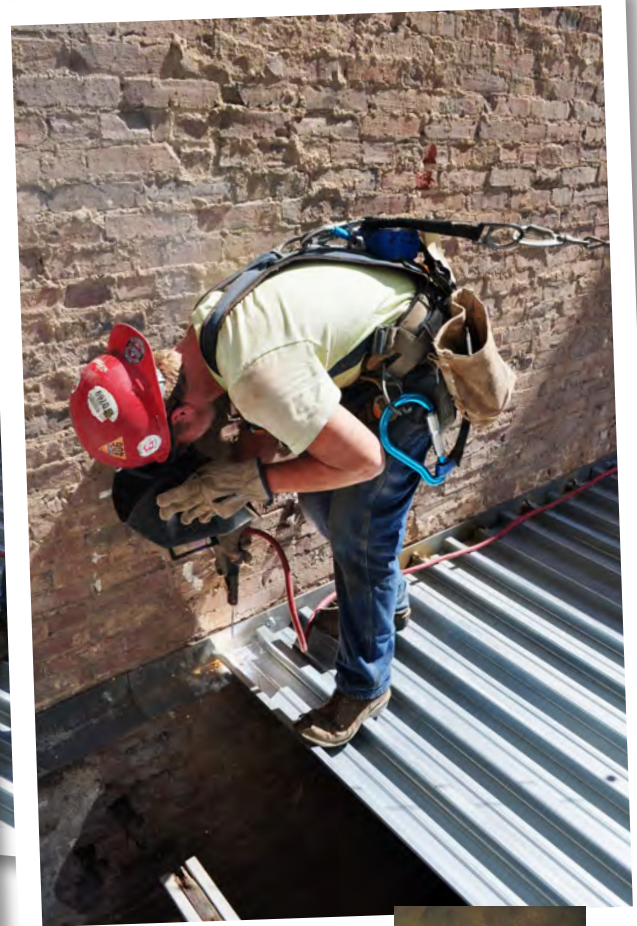
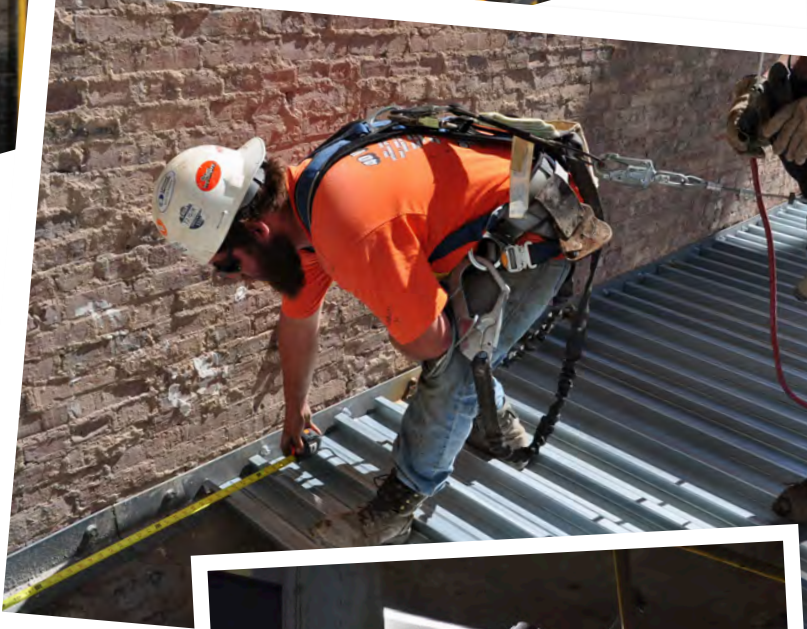
You may find in-depth program details on our website: www.kinsleyeducation.com. Applications for all apprentice programs are accepted beginning in January each year.



Kinsley Education Center currently has 32 Apprentices enrolled in the Carpentry, Ironworker or Highway Programs. This September there were 14 graduates from the Carpentry and Highway Apprentice Programs.

IRONWORKER APPRENTICE PROGRAM

The Ironworker program is a new State Approved Apprenticeship Program. Apprentices in this program are attached to the Steel Manufacturing Division. The Ironworker Program is a three-year program. During the three years, apprentices work with instructors in classroom instruction and with mentors from the Steel Manufacturing Division learning hands-on fieldwork. The training is geared toward the steel erection building practices and Apprentices are certified in specific welding techniques for steel work as well as Heavy Rigging. Apprentices are currently working on Steel Erection projects in Pennsylvania, New York, Delaware and Maryland.



Bonnie Brown
Kinsley Education Center
Training Coordinator